

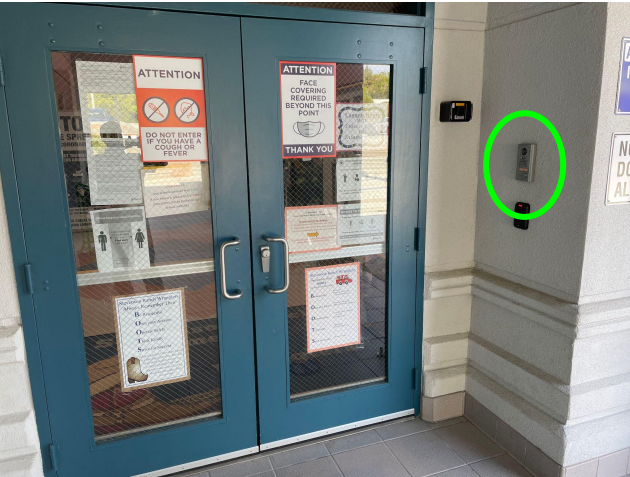
Stevenson Ranch School

Virtual Tour and Orientation



Welcome to Stevenson Ranch Elementary (SRE).

Welcome to SRE! We are glad to have you as part of our school community. As you click through these slides you will be able to visually tour our campus and become oriented to some of our programs.



Accessed through our flagpole courtyard is the front office.

On these doors we post information and fliers that are also posted electronically.

Use the buzzer on the wall to let the office know you are here.



Visitor Entrance
and
Main Office

Inside the main entrance is our inner lobby and main office. Our main building hallways connect the multiple purpose room, library, office, 20 of our classrooms, ancillary offices, staff lounge, workroom, and three sets of student restrooms.

Visitors to campus will use their driver's license to sign in with our Lobby Guard system.

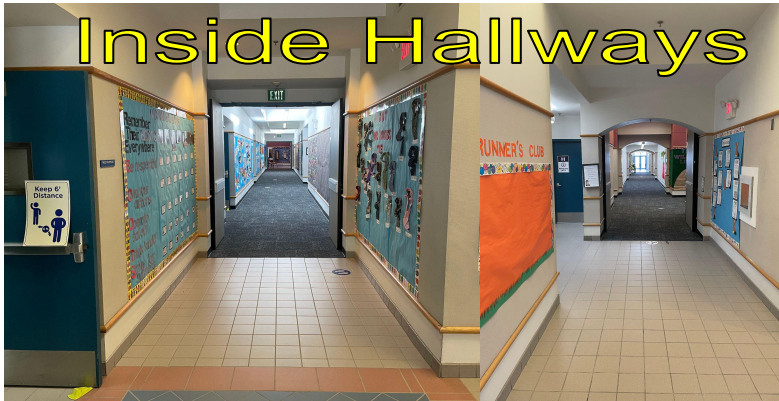
If needed, you can check your child out early from school from the front office. We use Lobby Guard for that process too, so please remember to bring your driver's license.

Our office is open school days from 7:30am to 4:00pm. We have a voicemail system for after hours. We ask that you notify the office if a student is going to be absent from school.

Students that arrive late to school will enter through the office.

Our health office is staffed with a health assistant, who tends to minor scrapes and injuries, as well as medication needs.

Our campus has classrooms along the hallways and classrooms that are outside as well.



Classrooms

Some of our classrooms are located in our main hallways. Others are located outside the main building. All classrooms are equipped with amplification system and interactive display board.



Main Building
Classrooms



Outdoor
Classrooms

Art Studio



Specialty Areas

Classes are scheduled into specialty areas. The frequency of the schedule varies by grade level.

Science Lab



Library



Multiple Purpose Room (MPR)

Our MPR and adjacent outdoor eating area is where students eat lunch each day.

Students may purchase a school lunch in the MPR as well. The blue roll up doors reveal the service area for lunch selection. A link to the the Santa Clarita Valley School Food Services agency is on our website.

Outside of lunch service, the tables fold into the walls making this a flexible space for performances, assemblies, indoor physical education, science fairs, and more.



MPR

Outdoor

Lunch

Tables

Kitchen and Lunch Service

Outside Spaces

Our campus has a variety of outside spaces for students to use to interact with others, play games, and more. In addition to our campus spaces, classes may use the park adjacent to our school for physical education.



Kindergarten Yard



Grass Field & Track



Library Courtyard



Primary Playground



Handball, Basketball, Volleyball, Tetherball, & 4 Square

Workroom and Staff Lounge

Staff and adult volunteers use the workroom to make copies and prepare materials for classroom projects. This is an adult only space.

The staff lounge is open to staff. Volunteers and other non-staff visitors are asked to respect this space by not entering it.



Arrival and Dismissal School

Visitor parking is curbside (be sure to read the signs carefully) on Carroll Lane and Faulkner Drive. There is also a homeowners parking lot across Carroll Lane. The school parking lot is reserved for staff.

When approaching campus it is important to use a crosswalk. There is one at the corner of Carroll Lane and Faulkner Drive, as well as at Carroll Lane and Clifton Place.



Students may enter campus up the access ramp on Faulkner Drive, or through the walk/driveway near Clifton Place off Carroll Lane. Students who are dropped off in the valet lane will enter campus through the Carroll Lane walk/driveway.



Students enter campus through the fire road gate and meet their class at their designated line up spot.

There is no valet for dismissal. A form is sent to parents about options when picking students up at the end of the school day.

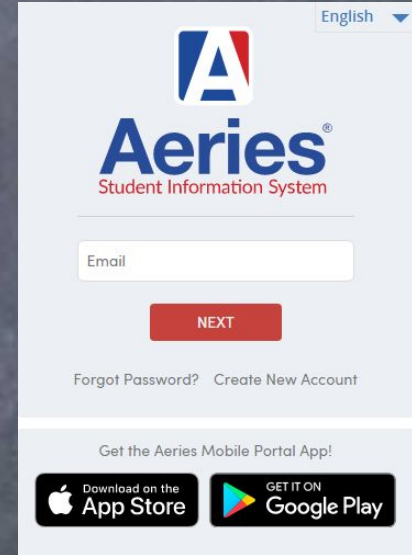
Communication and Information



ParentSquare: This is a platform that allows us to send email, phone and text messages. Most communication is sent digitally through email. Download the app so that you can set your preferences. Emails can also be viewed in ParentSquare as posts. A welcome email will be sent at the beginning of your first school year at Stevenson Ranch.

Aeries Parent Portal: This is your direct access to your child's school records. Each August you will be asked to verify contact information, and update permissions and health information. It is through this platform that you can access and print reports card too. Access will be sent to each parent when starting school with us for the first time.

Website: Our school website is full of information about our school. Under the resources tab you will find handbooks, forms, and resources to support learning at home. www.stevensonranchschool.com



[District Homepage](#)

[Our Schools](#) ▾

[Translate](#) ▾

[Sign In](#)

[Search](#) 🔍



**Stevenson Ranch
Elementary School**
First In Pride, First In Excellence



Schools



NSD
Calendar



Lunch



Employment



Facebook

[Home](#)

[About Us](#)

[Site Council](#)

[PTO](#)

[News](#)

[Grade Levels](#)

[Resources and Information](#)

[Innovations](#)

[PBIS / Attendance](#)

[Calendar](#)

Parent Teacher Organization (PTO)

The Stevenson Ranch Elementary Parent-Teacher Organization enriches our children's educational experience at Stevenson Ranch Elementary School. PTO sponsored activities and programs include; school day enrichment program for all students, field trips, disaster preparedness, family and student events, as well as funding special requests.

PTO meets once a month to discuss items presented before the executive board.

All parents, students, teachers, and SRE staff are encourage to attend and participate by sharing their desires for the school. The PTO section of our school website contains information about programs, budgets, current organization leaders and more.



School Site Council

School Site Council is a leadership group comprised 50% of parents and 50% of staff. The council oversees the annual school plan and monitors school budgetary decisions. Members are elected to a two year term in the spring.

Technology On Campus

Each classroom is equipped with a SMART board and document camera. There is one computer per student in grades 3-6, and one device per two students in grades TK-2. In addition, classes have access to our computer lab. District provided online resources and programs are available for use in school and at home.



Positive Behavior Supports and Interventions (PBIS)

Our PBIS program establishes expectations and provides supports to our students as members of our school community! Keeping with our school mascot of Wranglers, our PBIS acronym spells **BOOTS**: *Be Respectful, Own Your Actions, Operate Safely, Think Kindly, and Strive for Success*. Students earn paper gold bars for showing their BOOTS actions. These bars can be traded in for items at our student store or to participate in special events.

Student Council

Student Council is open to students in grade 4, 5 and 6. These student leaders are elected by other students, and hold regular meetings to plan community support activities, such as food drives, as well as events to promote campus spirit.

NSD Music Program

Our school district music program provides music instruction for all transitional kindergarten through third grade classrooms. Students in grades 4, 5, and 6 have the option to participate in chorus and instrumental programs.

NSD Arts Programing

Our school district arts programing includes: Art teacher instruction and performing arts specialist at select grade levels. More information will be shared by the classroom teacher during the appropriate year.

Stevenson Ranch Wranglers

Always Remember Their

Be Respectful

Own your Actions

Operate Safely

Think Kindly

Strive for Success



Stevenson Ranch Elementary School is a learning community dedicated to ensuring student success in a mutually respectful, safe and positive environment in which we all assume responsibility for our part.

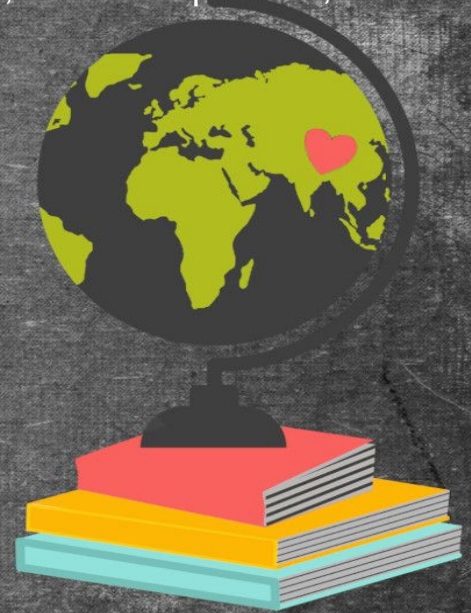
On-site Staff

Our 5 day per week campus staff includes: Principal, 3 Office Staff, Health Assistant, custodians, safety supervisors (recess and lunch supervision), behavior support specialist, counselor, resource specialist, technology support technician, and classroom teachers.

Other staff that are on our campus part of the week include: Psychologist, Occupational Therapist, Speech and Language Specialist, and music/orchestra teachers. Our art specialist is on campus select days of the school year.

Class Size

Class Size: Grades transitional kindergarten, first, second, and third grade have an average class size of 26 students to one teacher. Fourth, fifth, and sixth grades have an average class size of 30 students to one teacher.



Elements of a Typical School Day

Specific daily schedule times will be provided in direct communication from the school. This is an overview of a typical day.

Most teachers begin the day with language arts and Mathematics. Typically these two subjects together utilize the day up until lunch.

Recess: This break time is 20 minutes. Students can bring a snack from home or purchase a breakfast meal from the school cafeteria.

Lunch: This 45 minute time allows for students to eat and then play. Students may bring a lunch from home or purchase one from our cafeteria. After 20 minutes of eating time, students are dismissed to play outside until it is time to return to class.

After lunch classes typically have social studies, science, physical education, and more.

Schedules are adjusted on a day when there is a speciality area, such as science lab, art, and music.



Welcome to the SRE Wrangler Family!

We look forward to getting to know you,
and we are excited about all that
you will bring to our campus!

